

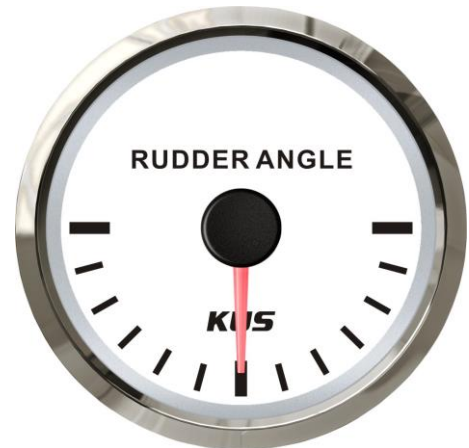
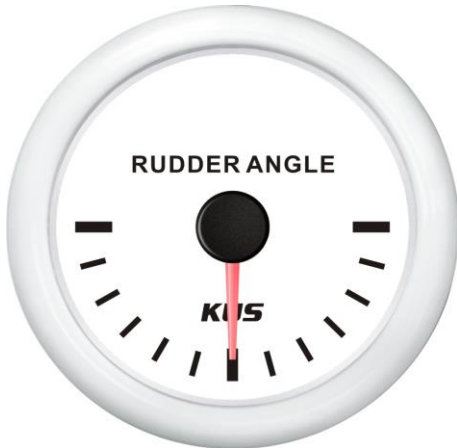
---

---

## Product Data Sheet

---

---



---

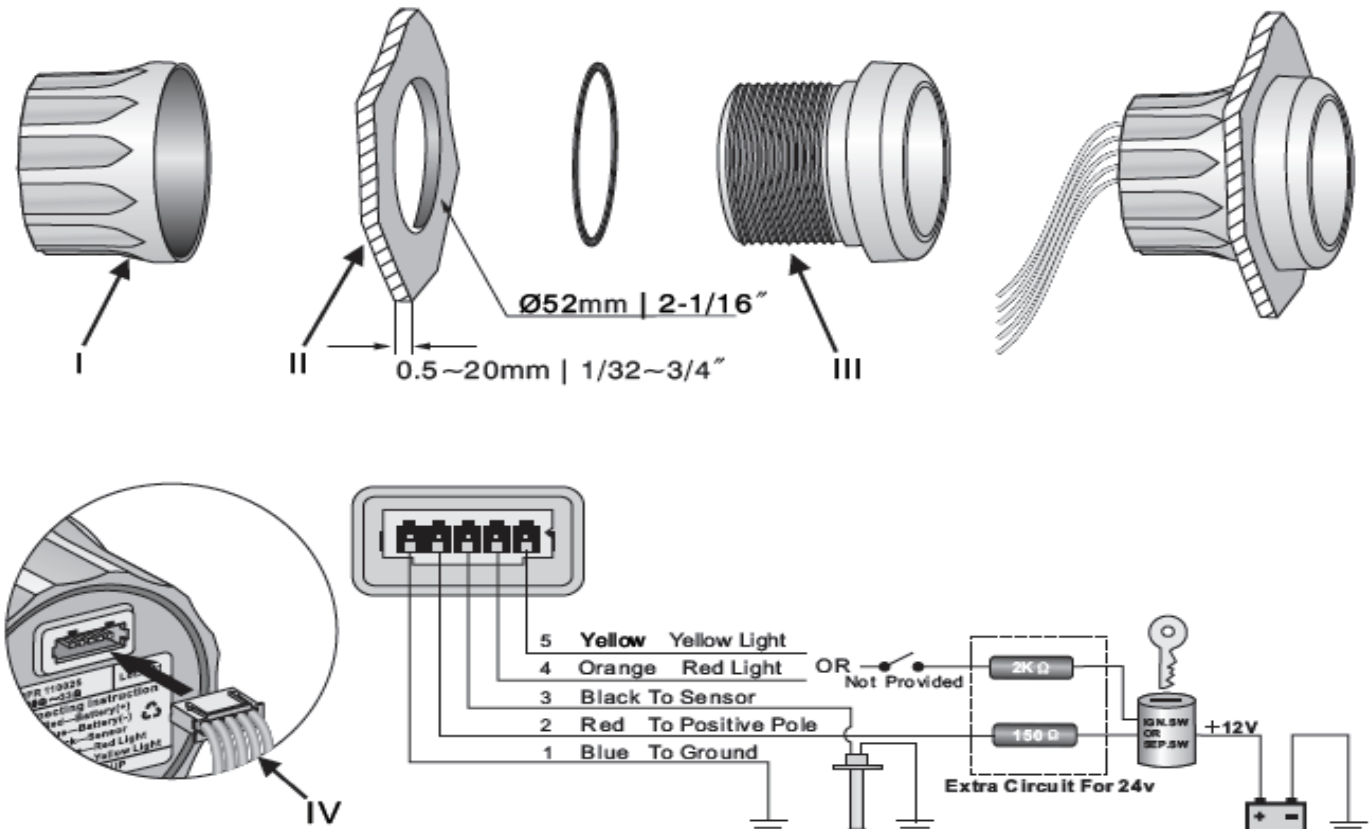
**Description:** The Rudder Angle Gauge shows the rudder position at all times. Accurate indication of the position of the steering rudder is extremely important when navigating through tight and crowded waterways.

---

|                            |  |                        |
|----------------------------|--|------------------------|
| <b>Product Type:</b>       | Rudder Angle                                 |                        |
| <b>Product Name:</b>       | CMRR   |                        |
| <b>Bezel:</b>              | SS 316 Stainless Steel                       | Plastic in Black/White |
| <b>Face Plate:</b>         | Black  | White                  |
| <b>Mounting Dimension:</b> | 52mm   |                        |
| <b>Protection Rating:</b>  | IP7 for front; can work up to 1m under water |                        |
| <b>Signal:</b>             | 1-190Ω 87-900Ω                               |                        |
| <b>Indicating Range:</b>   | R-L  |                        |
| <b>Operating Voltage:</b>  | 12/24V                                       |                        |
| <b>Background light</b>    | Red or Yellow                                |                        |
| <b>Connector:</b>          | Integrate with 12V/24V patchcord             |                        |
| <b>Movement:</b>           | Stepper Motor                                |                        |

---

## Installation Instructions



## INSTALLATION STEPS

1. Cut a 52mm (2 1/16") diameter panel hole (II). You will need a minimum clearance of 55mm (2 3/16") behind the panel to fit the gauge.
2. Remove fastening ring (I). There is an alignment tab on the gauge body (III), place the gauge in the panel hole and mark the position of this tab to correctly align the gauge.
3. Insert gauge through panel from the front, fit and tighten fastening ring (I) from the rear.
4. Connect wires according to wiring instruction. Note the use of dropping resistors for 24V circuit. Select either Orange or Yellow wires for backlighting. Wire colour corresponds with backlight colour.
5. Insert wire harness (IV) into port at the back of the gauge.
6. Please note, if the gauge is a voltmeter there is no black wire or resistors in the kit.