

KUS

NMEA2000 GATEWAY

User's Manual



www.kus-usa.com

Table of Contents

- 1. Overview 1**
 - 1.1 Brief Introduction
 - 1.2 Feature
 - 1.3 Specification
- 2. Installation 2**
 - 2.1 Mounting Way
 - 2.2 Electrical Connection
- 3. Mobile Phone APP Operation Introduction 4**
 - 3.1 Connect Equipment
 - 3.2 Switch Gauge
 - 3.3 Select Language
 - 3.4 Switch Style
 - 3.5 Switch Display Interface
 - 3.6 Set Parameter

Revision History

Version No.	Description
1.0	Initial file

1. Overview

1.1 Brief Introduction

NGW is a wireless signal converter that uses Bluetooth communication which sends real-time data of the engine. All the data is transmitted directly and showed on the app which is supported by Android and IOS. You can monitor the marine's NMEA2000 network data by NGW, including by not limited to oil level, water level, voltage, oil pressure, water temperature, and rotate speed.

1.2 Features

Bluetooth communication, easy mount, and use of standard micro-caccessible; no other outer equipment required.

Support for Android or IOS.

Three languages available: Chinese, English, and Spanish.

1.3 Specifications

Material: ABS. PC

Dimension: 79.4*40*21.5mm(including connector)

Working Voltage: 9-16V DC

Working Current: < 50mA

Bluetooth Frequency: 2.402GHz-2.480GHz

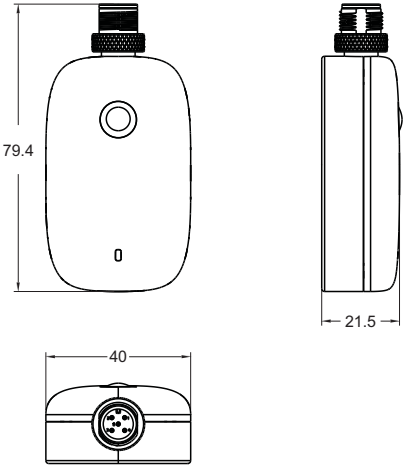
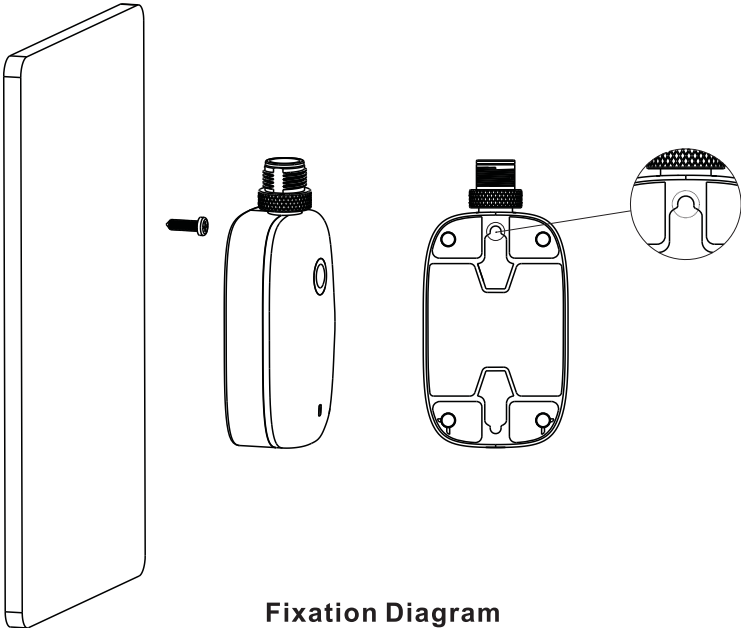
Effective Distance: 50m

- * The effective distance can reach up to 50m in an open outdoor environment. The actual effective distance will vary depending on obstacles in the environment.

2. Mount

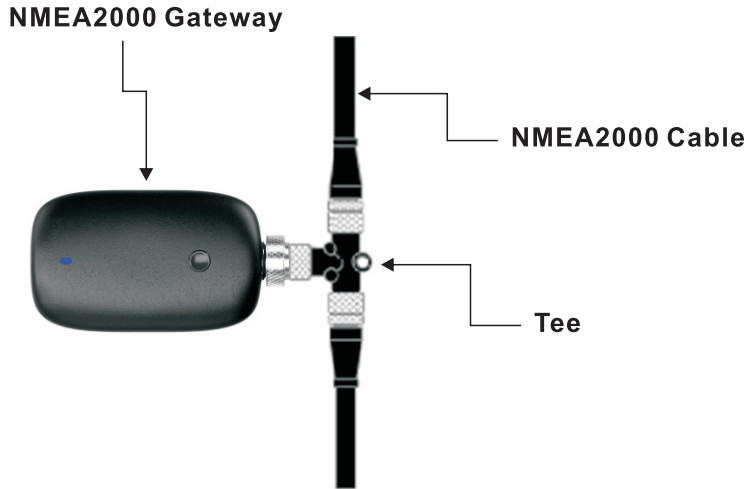
2.1 Mount Way

You can use the hole in the back of NGW for fixation. If the NGW needs to be installed vertically, you must use the screw to secure the device.

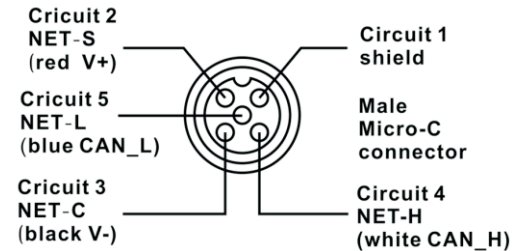


2.2 Electric Connection

After mounting connect the terminal of NGW to NMEA 2000 cable network, make sure the connector is twisted well. If the LED indicator of NGW flashes slowly it is not connected. Lighting appears when connected, when the unit flashes quickly the data is sent. NGW uses the Micro-C pin configuration as shown below.



Electric Connection Diagram



Male Micro-C Connector Diagram

3. Mobile phone APP operation introduction

3.1 Connect Equipment

You can use the hole in the back of NGW for fixation. If the NGW needs to be installed vertically, you must use the screw to secure the device.

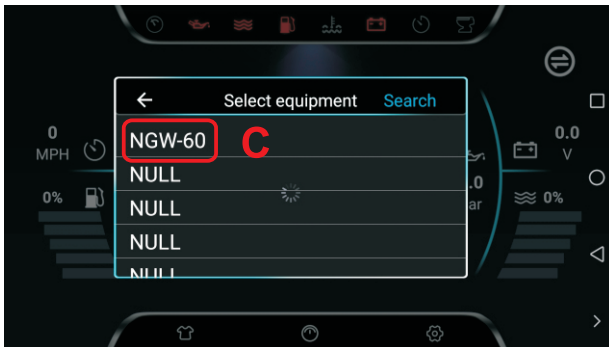
First time users must connect to the NGW manually by following the following steps:



A. Touch  button, popup setup window.

B. Touch Select equipment, then select the popup Bluetooth search window.

C. Select the NGW equipment that you would like to connect: NGW- XX (XX refers to the two Arabic numerals randomly).
The name of connected equipment will be shown in blue.



3.2 Switch Gauge



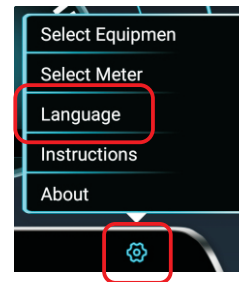
D

D. Return to the homepage, Touch  , this can switch to the gauge you need to display.

3.3 Select Language



F



E

E. Touch the  , the popup setup window will open.

F. Touch the Language option, the popup language selection window will open, you will then be able to choose the language you want the device to display.

3.4 Switch Style



G

G. Return to the homepage, touch , this can switch to the gauge you need to display.”

3.5 Switch Display Interface

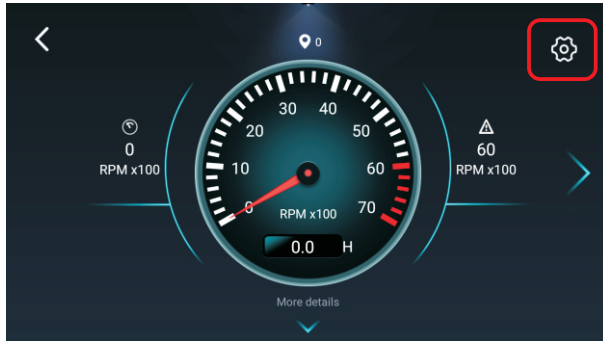



H

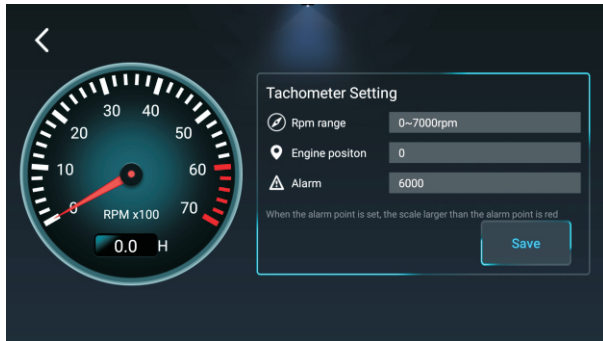
H. Return to homepage, touch  and enter the display interface of a single gauge.”

3.6 Set Gauge Parameter

Take the tachometer for example, after entering single gauge interface the current rotate speed will be showed as pointer and figures. You can slide up and down to check the gauge parameter and left and right to switch the gauge.



- I. In the single gauge display interface, touch  , to enter the setting interface. In the setting interface you can set parameters like the indication range, engine position, and alarm point. Touch the “Save” button to finish the setup when you are done.”



KUS

Since 1984

